



FlowDirector-3200-F

**32 QSFP+/QSFP28 40G/100G Ports
Programmable Network Flow Director**

Applications

- Network Monitoring and Forensic Infrastructure ■
- Network Visibility and SPAN Port Expansion ■
- Advanced Inline High Speed Network Diagnosis ■
- Lab Test Equipment Sharing and Automation ■
- Lab Equipment Cable Management Optimization ■
- Network Element Quality Assurance ■

32 40G/100G QSFP+/QSFP28

40G/100G QSFP+/QSFP28 Ports With DAC Support

Each 40G/100G Can Be Broken into 4x 10G/25G Ports

6.4Tbps Throughput, Low Latency

Powerful Flow Management

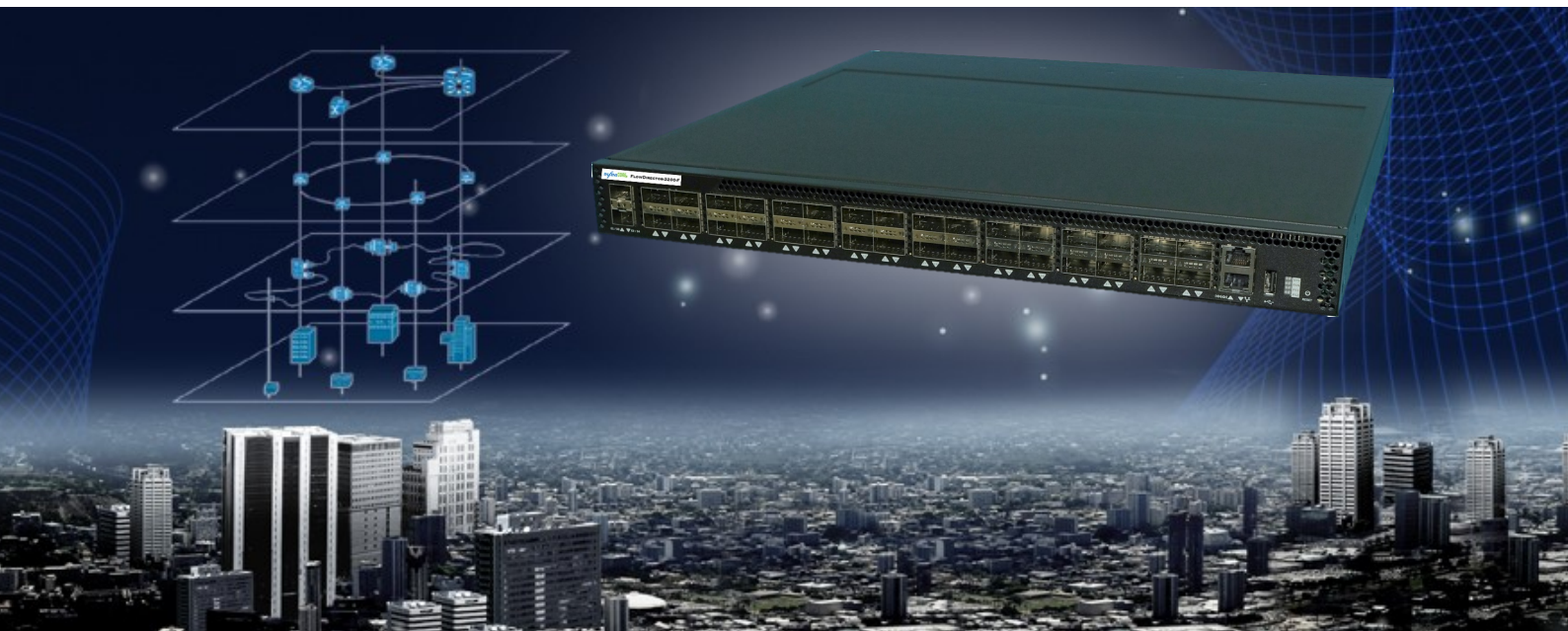
Supports Dynamic Virtual Wire; Inline Traffic Split and Merge; Traffic Replication; Traffic Aggregation; Fan out; Load Balancing and Switching all at line rate.

Cost Effective

1U Rack Mount

450W of Power Consumption

**Intel's P4 Programmable Tofino™
switch ASIC**



Next Generation Device Designed For Network Visibility and Forensic Infrastructure. Significantly Reduce SPAN Port Usage and Maintain Total Visibility for All Analytic Equipment. Improve Lab Tool Efficiency and Simplify Cable Management

FlowDirector-3200-F

InfiniFlow Series



- Network Monitoring and Forensic Infrastructure
- Maintain total visibility for all network monitoring and forensic devices
- Flexible traffic management modes, reliable and lossless for Ten Gigabit, Forty Gigabit, Twenty Five Gigabit and One Hundred Gigabit
- Standard based Easy to Use InfiniOS
- Web Based UI and CLI Support
- Programmable API to automate operating tasks
- Comprehensive Status and Statistics Indication through User Interface
- Improves Sharing of Lab Equipment
- Improves Lab Cable Management and inline diagnosis capabilities
- Low TCO
- Green

Contact us

Infinicore Inc.
<http://www.infinicoreinc.com>

Sales:
sales@infinicoreinc.com
Support:
support@infinicoreinc.com

Next Generation Device For Total Network Visibility

The Infinicore™ Network FlowDirector-3200-F helps network administrator to connect their high speed network to different monitoring and forensic devices without creating congestions. The FlowDirector-3200-F gives flexibilities to network administrators to deploy extra monitoring device on the fly without the needs for SPAN ports. Network administrators can chose many different traffic modes range from replication to load balancing to best suites their needs. For all functioning modes, The FlowDirector-3200-F provides up to 6.4Tbps throughput at line rate even for the smallest frame size.

Streamlined, Outstanding Software Package

The Network FlowDirector-3200-F is powered by Intel's P4 programmable Tofino™ switch ASIC InfiniOS with comprehensive remote management through Web Based GUI and Command Line Interface. Operator can access all the functionalities and monitor device status through Web based GUI.

Improve Lab Efficiency and Ease of Cable Management

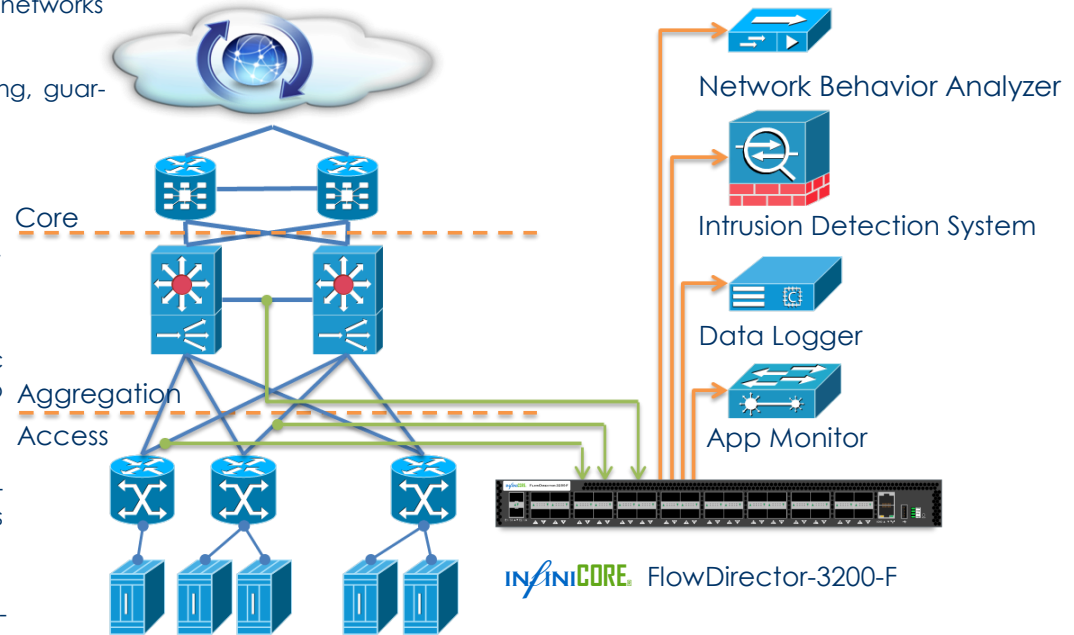
The Network FlowDirector-3200-F is a critical tool to help you to improve LAB efficiency and ease of cable management. You can share expensive, scarce load generation ports across different DUT models and teams without rewiring the cable. Using our innovative Virtual Wire technology, you can change the connectivity by simple mouse clicks. Additionally the FlowDirector-3200-F provides detailed statistics and plot capability so that you have complete visibility into your lab setup.

Name	Host Name	Speed	ECN	Action	Link	Transceiver	FlowDir	QueueDir	TrafficDir	Monitor	Admin	State	Flow	Queue	Operational
P1	P1	1000	NONE	ENB	DOWN	NDAFFICES	0	0	0	0	0	0%	0%	0%	<input checked="" type="checkbox"/>
P2	P2	1000	NONE	ENB	DOWN	RESEARCH	0	0	0	0	0	0%	0%	0%	<input checked="" type="checkbox"/>
P3	P3	1000	NONE	ENB	DOWN		0	0	0	0	0	0%	0%	0%	<input checked="" type="checkbox"/>
P4	P4	1000	NONE	ENB	DOWN		0	0	0	0	0	0%	0%	0%	<input checked="" type="checkbox"/>
P5	P5	1000	NONE	ENB	DOWN		0	0	0	0	0	0%	0%	0%	<input checked="" type="checkbox"/>
P6	P6	1000	NONE	ENB	DOWN		0	0	0	0	0	0%	0%	0%	<input checked="" type="checkbox"/>
P7	P7	1000	NONE	ENB	DOWN	LOPPACAD	0	0	0	0	0	0%	0%	0%	<input checked="" type="checkbox"/>
P8	P8	1000	NONE	ENB	DOWN		0	0	0	0	0	0%	0%	0%	<input checked="" type="checkbox"/>
P9	P9	1000	NONE	ENB	DOWN		0	0	0	0	0	0%	0%	0%	<input checked="" type="checkbox"/>
P10	P10	1000	NONE	ENB	DOWN		0	0	0	0	0	0%	0%	0%	<input checked="" type="checkbox"/>
P11	P11	1000	NONE	ENB	DOWN		0	0	0	0	0	0%	0%	0%	<input checked="" type="checkbox"/>
P12	P12	1000	NONE	ENB	DOWN		0	0	0	0	0	0%	0%	0%	<input checked="" type="checkbox"/>

Highlights of Product Use Cases

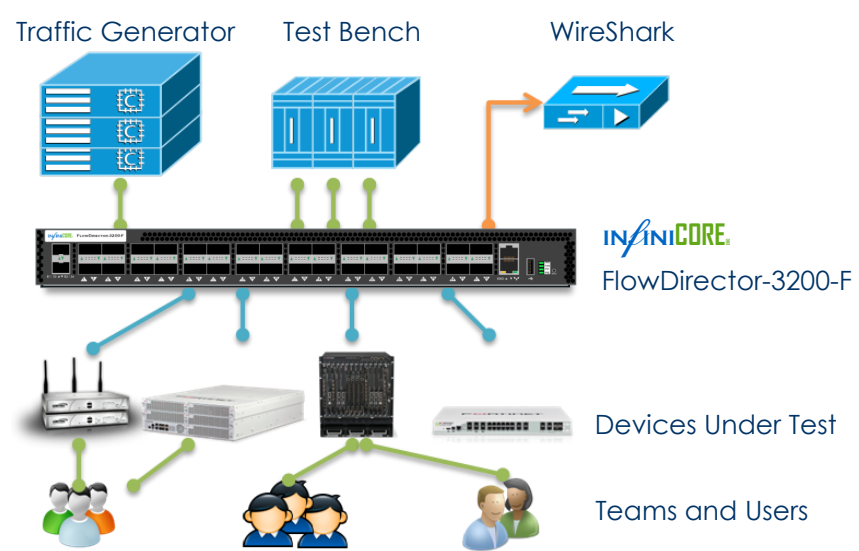
Next Generation Device for Network Monitoring and Forensic Infrastructure

- Single Or Multiple Points Deployment, minimum impact to networks
- Line rate packet forwarding, guaranteed performance
- Connect unlimited Monitoring devices on the fly without service interruption
- Advanced built-in traffic management modes to meet your needs
- Help network meet regulatory compliance such as SOX, PCI and HIPPA
- Wide range of media support, 100G, 40G, 25G, 10G



Improve Sharing of Scarce Lab Resource and Simplify Cable Management

- Sharing Expensive Tester Ports across multiple teams and DUTs
- Automatically switch connections between tester and DUTs
- Non-intrusive sniffer solution. Taps can be created in real time and on demand
- Run regression test across different DUTs without cable switching
- User management and port reservation
- Comprehensive Statistics and Counters, Total visibility to network state and traffic



- Efficiently Share Lab Equipment and DUTs
- No Cable Rewiring
- Non intrusive traffic monitoring

All specifications and figures are subject to change without prior notice.
 Actual products may look different from the photos.
 All trademarks and logos are the properties of InfiniCore Inc. All rights reserved.

Innovation Towards Total Visibility Into Your Network

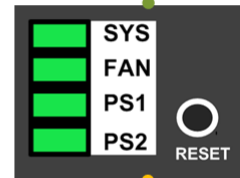
- **Data centers** and **enterprises** that deploy IDS, Probes, data logger devices
- **Governments** and **agencies** network monitoring, forensic collection
- **Service providers** delivering services and applications over IP networks
- **Operators** maintaining networks and standard compliance
- **Third parties** and **labs** performing devices validation and certification

40G/100G QSFP+/QSFP28 Status Lights

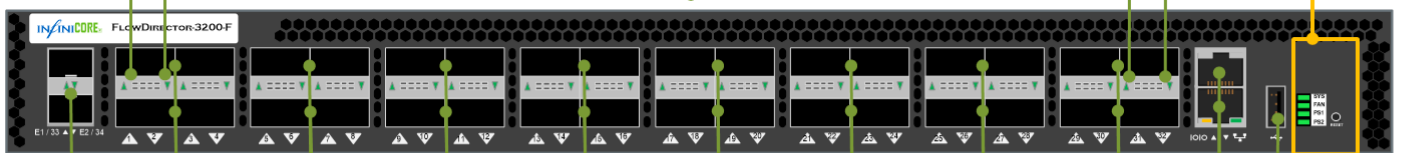
40G/100G Ethernet 1 to 32 Ports LEDs Status as below:

- ▲ A Valid 100Gbps Link is established: Steady Green
- ▲ Transmit or Receive Packets at 100Gbps: Blinking Green
- ▲ A Valid 40Gbps Link is established: Steady Yellow
- ▲ Transmit or Receive Packets at 40Gbps: Blinking Yellow
- ▲ No Network Link: Off

System and PSU LEDs



- SYS: Green Normal
- FAN: Green Normal
- PS1: Green Normal
- PS2: Green Normal
- RESET Button



1G/10 SFP/SPF+ Ports

Provide 1G/10G SFP/SPF+ Connectivity

40G/100G QSFP+/QSFP28 Ports

Provide 40G/100G QSFP+/QSFP28 Connectivity

Console Port Management Port

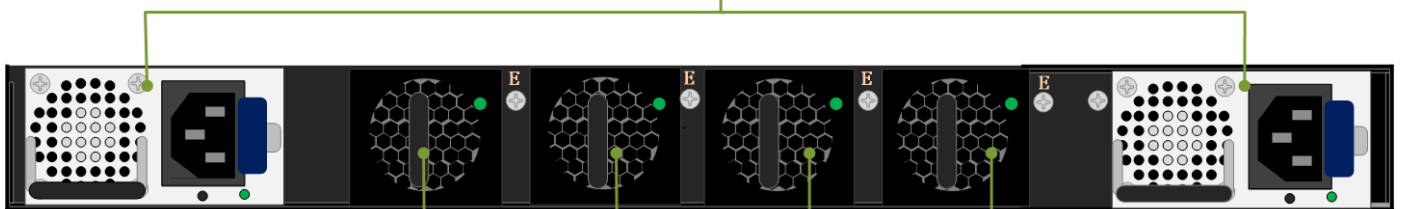
For connection to InfiniOS command line interface
Provide Ethernet connection for management interface

USB Port

For use with USB device

AC Power Supply

AC power connection for use with the supplied power cords



Hot Swappable Fans

InfiniCore™ FlowDirector-3200-F Order Information

Part Number	Redundant Power Supply	Form Factor	Operating Temperature
FDS-3200-F-R2	Dual Modules	1U Rack Mountable	0-40 C

Contact InfiniCore Sales sales@infinicoreinc.com
For more information, visit <http://www.infinicoreinc.com>